

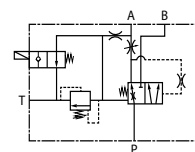
VÁLVULAS HIDRÁULICAS

Hydraulic valves
Valves hydrauliques
Valvole idrauliche

Válvula eléctrica martillos



Hammer control valve
Valve électrique pour actionnement marteaux
Valvola per azionamento martelli

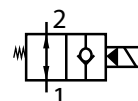


| Referencia Part n° | VOLTAJE (V) VOLTAGE (V) | CAUDAL MÁX. (l/min) MAX. FLOW (l/min) | PRESIÓN MÁX. (bar) MAX. PRESSURE (bar) | TARAJE (bar) SETTING (bar) | CAMPO REG. (bar) REG. RATE (bar) | € |
|-----------------------|----------------------------|--|---|-------------------------------|-------------------------------------|----------|
| FPEXCHEV123/4S20 | 12 VDC | 200 | 350 | 200 | 50-210 | 1.063,80 |
| FPEXCHEV123/4S35 | 12 VDC | 200 | 350 | 350 | 100-350 | 1.063,80 |
| FPEXCHEV243/4S20 | 24 VDC | 200 | 350 | 200 | 50-210 | 1.063,80 |
| FPEXCHEV243/4S35 | 24 VDC | 200 | 350 | 350 | 100-350 | 1.063,80 |

Válvula completa bidireccional N.A.



Normally open 2 ways valve
Valve normalement ouverte 2 voies
Valvola bidirezionale completa N.A.

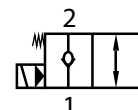


| Referencia Part n° | ROSCA THREAD | VOLTAJE (V) VOLTAGE (V) | CAUDAL MÁX. (l/min) MAX. FLOW (l/min) | PRESIÓN MÁX. (bar) MAX. PRESSURE (bar) | € |
|-----------------------|-----------------|----------------------------|--|---|--------|
| VCC08NA12CC | 3/8" BSP | 12CC | 35 | 230 | 180,03 |
| VCC08NA24CC | 3/8" BSP | 24CC | 35 | 230 | 169,36 |
| VCC08NA220AC | 3/8" BSP | 220AC | 35 | 230 | 176,20 |
| VCC10NA12CC | 1/2" BSP | 12CC | 80 | 230 | 192,54 |
| VCC10NA24CC | 1/2" BSP | 24CC | 80 | 230 | 192,54 |
| VCC10NA220AC | 1/2" BSP | 220AC | 80 | 230 | 209,84 |
| VCC12NA12CC | 3/4" BSP | 12CC | 115 | 210 | 438,90 |
| VCC12NA24CC | 3/4" BSP | 24CC | 115 | 210 | 438,90 |
| VCC12NA220AC | 3/4" BSP | 220AC | 115 | 210 | 454,57 |

Válvula completa bidireccional N.C.



Normally closed 2 ways valve
Valve normalement fermée 2 voies
Valvola bidirezionale completa N.C.



| Referencia Part n° | ROSCA THREAD | VOLTAJE (V) VOLTAGE (V) | CAUDAL MÁX. (l/min) MAX. FLOW (l/min) | PRESIÓN MÁX. (bar) MAX. PRESSURE (bar) | € |
|-----------------------|-----------------|----------------------------|--|---|--------|
| VCC08NC12CC | 3/8" BSP | 12CC | 35 | 230 | 146,86 |
| VCC08NC24CC | 3/8" BSP | 24CC | 35 | 230 | 160,04 |
| VCC08NC220AC | 3/8" BSP | 220AC | 35 | 230 | 153,70 |
| VCC10NC12CC | 1/2" BSP | 12CC | 80 | 230 | 166,48 |
| VCC10NC24CC | 1/2" BSP | 24CC | 80 | 230 | 166,48 |
| VCC10NC220CA | 1/2" BSP | 220CA | 80 | 230 | 189,46 |
| VCC12NC12CC | 3/4" BSP | 12CC | 115 | 210 | 415,39 |
| VCC12NC24CC | 3/4" BSP | 24CC | 115 | 210 | 415,38 |
| VCC12NC220AC | 3/4" BSP | 220AC | 115 | 210 | 431,07 |

Bloque válvula dos vías



Block 2 ways valve
Bloc valve-2 voies
Valvola di blocco a 2 vie

| Referencia Part n° | ROSCA THREAD | TAMAÑO SIZE | € |
|-----------------------|-----------------|----------------|-------|
| CVE04C | 3/4-16UNF | 3/8" BSP | 42,22 |
| CVE06C | 7/8-14UNF | 3/8" BSP | 44,38 |
| CVE08C | 1"1/16-12UNF | 1/2" BSP | 81,96 |
| CVE08C1 | 7/8" - 14UNF | 1/2" BSP | 51,53 |
| CVE12C | 1"1/16-12UNF | 3/4" BSP | 81,96 |

La 1ª rosca corresponde con la rosca de la válvula y la 2ª con las utilizaciones / 1st thread corresponds to the screw thread of the valve and the 2nd to the use given / 1er filetage correspond au filetage de la valve et le deuxième aux utilisations / Il 1° filetto corrisponde con il filetto della valvola e il 2° con gli utilizzi

VÁLVULAS HIDRÁULICAS

Hydraulic valves
Valves hydrauliques
Valvole idrauliche



Bloque válvula tres vías 3/8

Block 3 ways 3/8 valve
Bloc valve-3 voies 3/8
Valvola di blocco a 3 vie 3/8

| Referencia Part n° | PARA VÁLVULA FOR VALVE | ROSCA VÁLVULA VALVE THREAD | TAMAÑO SIZE | € |
|-----------------------|---------------------------|-------------------------------|----------------|--------------|
| CVE302C | ALVEAR | M22x1,5 | 6 | 57,47 |
| CVE304C | VECO08 | 3/4" UNF | 8 | 51,71 |
| CVE308C | VECO10 | 7/8" UNF | 10 | 56,15 |

La 1ª rosca corresponde con la rosca de la válvula y la 2ª con las utilizations / 1st thread corresponds to the screw thread of the valve and the 2nd to the use given / 1er filetage correspond au filetage de la valve et le deuxième aux utilisations / Il 1° filetto corrisponde con il filetto della valvola e il 2° con gli utilizzi



Bloque válvula tres vías 1/2

Block 3 ways 1/2 valve
Bloc valve-3 voies 1/2
Valvola di blocco a 3 vie 1/2

| Referencia Part n° | PARA VÁLVULA FOR VALVE | ROSCA VÁLVULA VALVE THREAD | TAMAÑO SIZE | € |
|-----------------------|---------------------------|-------------------------------|----------------|---------------|
| CVE306C | VECO12 | 1"1/16 UNF | | 111,75 |

La 1ª rosca corresponde con la rosca de la válvula y la 2ª con las utilizations / 1st thread corresponds to the screw thread of the valve and the 2nd to the use given / 1er filetage correspond au filetage de la valve et le deuxième aux utilisations / Il 1° filetto corrisponde con il filetto della valvola e il 2° con gli utilizzi



Bloque válvula cuatro vías

Block 4 ways valve
Bloc valve-4 voies
Valvola di blocco a 4 vie

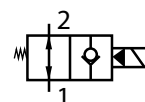
| Referencia Part n° | PARA VÁLVULA FOR VALVE | ROSCA VÁLVULA VALVE THREAD | TAMAÑO SIZE | € |
|-----------------------|---------------------------|-------------------------------|----------------|--------------|
| CVE404C | VEFL08 | 3/4" UNF | 8 | 78,83 |
| CVE408C | VEFL10,VEDE10,VECM10 | 7/8" UNF | 10 | 72,78 |

La 1ª rosca corresponde con la rosca de la válvula y la 2ª con las utilizations / 1st thread corresponds to the screw thread of the valve and the 2nd to the use given / 1er filetage correspond au filetage de la valve et le deuxième aux utilisations / Il 1° filetto corrisponde con il filetto della valvola e il 2° con gli utilizzi

Válvulas de acc. eléctrico insertable normalmente abierta



Carttridge valve 2 ways normally open
Cartouche valve 2 voies normalement ouverte
Valvole per azionamento elettrico a cartuccia N.A.

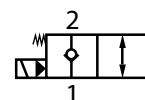


| Referencia Part n° | ROSCA THREAD | TAMAÑO SIZE | CAUDAL MÁX. (l/min) MAX. FLOW (l/min) | PRESIÓN MÁX. (bar) MAX. PRESSURE (bar) | € |
|-----------------------|-----------------|----------------|--|---|---------------|
| VENA08 | 3/4"-16UNF | 8 | 35 | 230 | 94,36 |
| VENA10 | 7/8"-14UNF | 10 | 80 | 230 | 108,62 |
| VENA12 | 1"1/16-12UNF | 12 | 115 | 210 | 270,02 |

Válvulas de acc. eléctrico insertable normalmente cerrada



Carttridge valve 2 ways normally closed
Cartouche valve 2 voies normalement fermée
Valvole per azionamento elettrico a cartuccia N.C.



| Referencia Part n° | ROSCA THREAD | TAMAÑO SIZE | CAUDAL MÁX. (l/min) MAX. FLOW (l/min) | PRESIÓN MÁX. (bar) MAX. PRESSURE (bar) | € |
|-----------------------|-----------------|----------------|--|---|---------------|
| VENC08 | 3/4"-16UNF | 8 | 35 | 230 | 69,85 |
| VENC10 | 7/8"-14UNF | 10 | 80 | 230 | 80,18 |
| VENC12 | 1"1/16-12UNF | 12 | 115 | 210 | 239,76 |

VÁLVULAS HIDRÁULICAS

Hydraulic valves
Valves hydrauliques
Valvole idrauliche

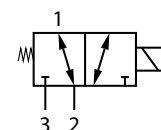
Válvulas de acc. eléctrico insertable 3 vías



Cartdrigde valve 3 ways

Cartouche valve 3 voies

Valvole per azionamento elettrico a cartuccia a 3 vie



| Referencia Part n° | ROSCA THREAD | TAMAÑO SIZE | CAUDAL MÁX. (l/min) MAX. FLOW (l/min) | PRESIÓN MÁX. (bar) MAX. PRESSURE (bar) | € |
|-----------------------|-----------------|----------------|--|---|--------|
| VECO08 | 3/4"-16UNF | 8 | 17 | 230 | 85,72 |
| VECO10 | 7/8"-14UNF | 10 | 28 | 230 | 93,59 |
| VECO12 | 1"1/16-12UNF | 14 | 60 | 240 | 224,92 |

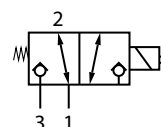
Válvulas de acc. eléctrico insertable 3 vías con antirretornos



Cartdrigde valve 3 ways with check valve

Cartouche valve 3 voies avec antiretour

Valvole per azionamento elettrico a cartuccia a 3 vie con antiritorno



| Referencia Part n° | ROSCA THREAD | TAMAÑO SIZE | CAUDAL MÁX. (l/min) MAX. FLOW (l/min) | PRESIÓN MÁX. (bar) MAX. PRESSURE (bar) | € |
|-----------------------|-----------------|----------------|--|---|--------|
| ALVEAR06 | M22x1.5 | 6 | 20 | 230 | 179,11 |

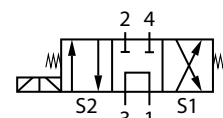
Válvulas de acc. eléctrico insertable 4 vías 3 pos. corr. n° 2



Cartdrigde valve 4 ways 3 pos. spool n° 2

Cartouche valve 4 voies 3 pos. tiroir n° 2

Valvole per azionamento elettrico a cartuccia a 4 vie, 3 posiz., cursore n.2



| Referencia Part n° | ROSCA THREAD | TAMAÑO SIZE | CAUDAL MÁX. (l/min) MAX. FLOW (l/min) | PRESIÓN MÁX. (bar) MAX. PRESSURE (bar) | € |
|-----------------------|-----------------|----------------|--|---|--------|
| VECM10 | 7/8"-14UNF | 10 | 16 | 230 | 164,93 |

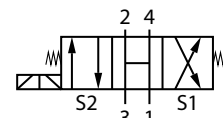
Válvulas de acc. eléctrico insertable 4 vías 3 pos. corr. n° 3



Cartdrigde valve 4 ways 3 pos. spool n° 3

Cartouche valve 4 voies 3 pos. tiroir n° 3

Valvole per azionamento elettrico a cartuccia a 4 vie, 3 posiz., cursore n.3



| Referencia Part n° | ROSCA THREAD | TAMAÑO SIZE | CAUDAL MÁX. (l/min) MAX. FLOW (l/min) | PRESIÓN MÁX. (bar) MAX. PRESSURE (bar) | € |
|-----------------------|-----------------|----------------|--|---|--------|
| VEDE10 | 7/8"-14UNF | 10 | 15 | 230 | 160,14 |

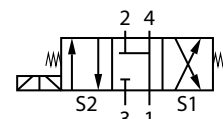
Válvulas de acc. eléctrico insertable 4 vías 3 pos. corr. n° 6



Cartdrigde valve 4 ways 3 pos. spool n° 6

Cartouche valve 4 voies 3 pos. tiroir n° 6

Valvole per azionamento elettrico a cartuccia a 4 vie, 3 posiz., cursore n.6



| Referencia Part n° | ROSCA THREAD | TAMAÑO SIZE | CAUDAL MÁX. (l/min) MAX. FLOW (l/min) | PRESIÓN MÁX. (bar) MAX. PRESSURE (bar) | € |
|-----------------------|-----------------|----------------|--|---|--------|
| VEFLO8 | 3/4"-16UNF | 8 | 10 | 230 | 122,91 |
| VEFL10 | 7/8"-14UNF | 10 | 20 | 230 | 150,43 |

VÁLVULAS HIDRÁULICAS

Hydraulic valves
Valves hydrauliques
Valvole idrauliche

Bobinas



Coils

Bobines

Bobine

| Referencia Part n° | TAMAÑO SIZE | VOLTAJE (V) VOLTAGE (V) | POTENCIA (W) POWER (W) | PROTECCIÓN (IP) PROTECTION (IP) | € |
|-----------------------|----------------|----------------------------|---------------------------|------------------------------------|-------|
| CB0812DC | 8 | 12VDC | 20W | IP65 CLASS H | 37,32 |
| CB0824DC | 8 | 24VDC | 20W | IP65 CLASS H | 29,12 |
| CB08110AC | 8 | 110VAC | 18,5W | IP65 CLASS H | 28,53 |
| CB08220AC | 8 | 220VAC | 17W | IP65 CLASS H | 29,12 |
| CB1012DC | 10 | 12VDC | 26W | IP65 CLASS H | 35,06 |
| CB1024DC | 10 | 24VDC | 26W | IP65 CLASS H | 44,84 |
| CB10110AC | 10 | 110VAC | 22W | IP65 CLASS H | 41,68 |
| CB10220AC | 10 | 220VAC | 22W | IP65 CLASS H | 41,32 |
| CB1212DC | 12 | 12VDC | 16W | IP65 CLASS H | 36,59 |
| CB1224DC | 12 | 24 VDC | 16W | IP65 CLASS H | 36,59 |
| CB12110AC | 12 | 110VAC | 30W | IP65 CLASS H | 88,12 |
| CB12220AC | 12 | 220VAC | 30W | IP65 CLASS H | 70,89 |
| CB1412DC | 14 | 12VDC | 30W | IP65 CLASS H | 61,70 |
| CB1424DC | 14 | 24VDC | 30W | IP65 CLASS H | 61,70 |

CB1412DC y CB1424DC válidas solo para VECO12. Conector rectificador requerido para bobinas AC / CB1412DC y CB1424DC for VECO12 only. Rectifier connector required for AC coils. / CB1412DC y CB1424DC valides seulement pour VECO12. Connecteur redresseur à utiliser sur bobines en CA. / CB1412DC e CB1424DC validi solo per VECO12. Connettore rettificatore richiesto per bobine AC

Otras bobinas



Others coils

Autres bobines

Altre bobine

| Referencia Part n° | LONGITUD (mm) LENGTH (mm) | Ø INTERIOR Ø INNER | VOLTAJE (V) VOLTAGE (V) | € |
|-----------------------|------------------------------|-----------------------|----------------------------|--------|
| BOBBIN19-12CC | 50 | 19 mm | 12 VDC | 106,78 |
| BOBCOM110RAC | 50 | 16 mm | 110/50V RAC | 77,14 |
| BOBBIN19-24CC | 50 | 19 mm | 24 DVC | 101,93 |
| BOBBP-12CC | 50 | 16 mm | 12 VDC | 138,57 |
| BOBTEC-12CC | 38,5 | 13mm | 12 VDC | 47,96 |
| BOBBP-24CC | 50 | 16 mm | 24 VDC | 138,57 |
| BOBCOM12VDC | 50 | 16 mm | 12 VDC | 69,68 |
| BOBTEC-24CC | 38,5 | 13mm | 24 VDC | 47,96 |
| BOBCOM24VDC | 50 | 16 mm | 24 VDC | 65,85 |
| BOBCOM220 | 50 | 16 mm | 220/50V RAC | 91,72 |
| BOBFEN12CC | 37 | 13,5mm | 12 VDC | 55,81 |